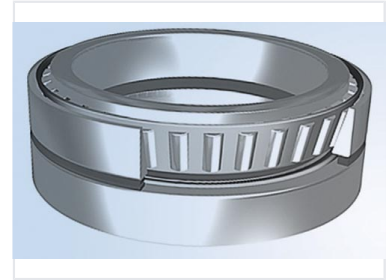


Wind Turbine Tapered Roller Bearing

This tapered roller bearing is designed for wind generator applications. It features a robust construction to withstand high loads and varying operating conditions, providing smooth and efficient rotation while minimizing friction and wear.



Product Overview

High-Performance Wind Turbine Bearing

This tapered roller bearing is engineered specifically for the demanding requirements of wind generator applications. Its robust construction ensures reliable performance under high loads and fluctuating operating conditions. Designed to minimize friction and wear, this component significantly enhances rotational efficiency and operational longevity in both main shaft and gearbox configurations.

Technical Specifications

Operational Performance

1 Minimized

Friction Coefficient

Key Features

- Robust structural design
- High load capacity
- Varying condition durability
- Optimized rotational efficiency

Application Compatibility

Main Shaft, Gearbox