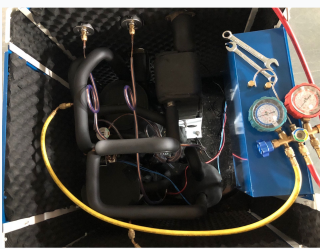


# Water Source Heat Pump System

This water source heat pump system provides efficient heating and cooling using a reliable compressor. It is engineered for space-saving installation and consistent performance.



## ADDITIONAL IMAGES



## Product Overview

### High-Efficiency Thermal Management

This water source heat pump system is engineered for optimal performance in both heating and cooling applications. By integrating high-quality components like the scroll compressor and advanced heat exchangers, the unit ensures reliable and cost-effective thermal regulation. Its compact design facilitates space-saving installation while maintaining accessibility for essential maintenance tasks.

## Core Components

### Integrated Components

- Compressor
- Evaporator
- Condenser
- Electronic control system
- Expansion valve
- Heat exchangers

## Technical Features

### Monitoring & Maintenance

- System pressure gauges
- Service ports
- Maintenance wrenches included

### Design Features

Compact Design, Insulated Piping, Space-saving, Efficient Heat Transfer

## Application

### Suitable Environments

Residential Applications • Commercial Applications • Water Heating