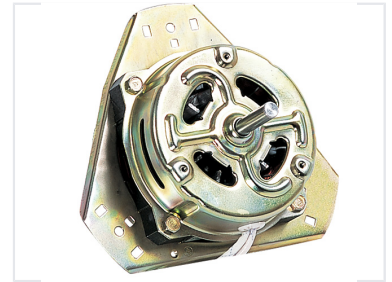


Washing Machine Motor

This motor powers the rotation of the drum or agitator in washing machines. It features a durable metal housing and mounting bracket for secure attachment.



Product Overview

High-Performance Universal Washing Machine Motor

This robust washing machine motor is engineered for reliability and consistent performance in residential or commercial laundry appliances. Featuring a durable metal housing designed for efficient heat dissipation, it ensures long-term operational stability under heavy loads. Its universal design allows for flexible integration into various washing machine models, providing a dependable solution for drum rotation and mechanical power transmission.

Technical Specifications

Motor Type	Universal
Housing Material	Metal

Physical Characteristics

Mounting	Integrated mounting bracket
Shaft Configuration	Central extending shaft

Certifications and Compliance

Key Features	Heat Dissipation, Universal Compatibility, Heavy Duty
--------------	---