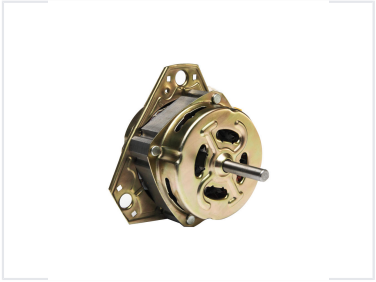


# Washing Machine Electric Motor

This electric motor is designed for washing machine applications. It features robust construction for durability and delivers efficient operation.



## Product Overview

### Product Overview

This series electric motor is specifically engineered for use in high-performance washing machines and various other household appliances. Its robust design ensures durability, providing reliable power delivery and long-lasting operational efficiency. Built to integrate seamlessly with a variety of machine models, this unit is a versatile solution for home appliance manufacturing.

## Technical Specifications

Primary Application	Washing Machine, Home Appliances
Motor Class	Series Motor