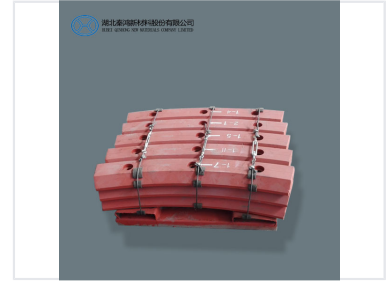
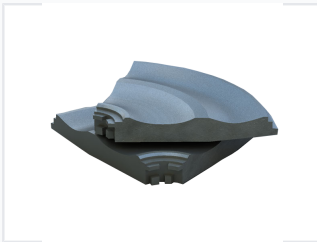


# Vertical Roller Mill Table Liner

This high chrome cast iron table liner is designed for vertical roller mills. It provides a durable wear surface, optimizing grinding efficiency and extending the lifespan of the mill table.



## ADDITIONAL IMAGES



## Product Overview

### Industrial Grinding Efficiency

These vertical roller mill table liners are engineered for high-performance grinding in cement and power industries. Constructed from high-chromium cast iron, they offer superior abrasion resistance and impact strength compared to standard parts. Designed to optimize grinding efficiency, they provide a reliable, durable surface that extends the lifespan of mill tables in demanding mining and production environments.

## Technical Compatibility

### Compatible Mill Types

FL Smidth ATOX, Loesche LM, MPS, RM, CKP, MLS, MPF, TRM, HRM, ZGM, HP

## Performance & Material

### Lifespan Improvement

**10 %**

Increased Lifespan

### Material

High-chromium cast iron

## Global Reach

### Exported Regions

- Russia
- Germany
- Pakistan
- Costa Rica
- Argentina
- Greece
- Denmark
- Colombia
- Far East