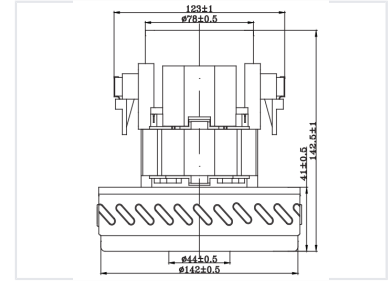
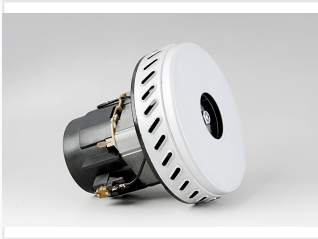


# Vacuum Cleaner Motor

This dry and wet vacuum cleaner motor features a single fan design. It provides large airflow and a long operational life.



## ADDITIONAL IMAGES



## Product Overview

### High-Performance HWX-CG27(B-2) Vacuum Motor

The HWX-CG27(B-2) is a versatile dry and wet vacuum cleaner motor engineered for high suction efficiency and reliable operation. With a robust design capable of handling up to 1400W of power, it is suitable for various vacuum cleaner applications. The unit features integrated thermal protection and advanced cooling to ensure longevity and consistent power output.

## Technical Performance

### Key Performance Metrics

**1400 W**

Max Input Power

**20 Kpa**

Max Vacuum

**3.4 m3/min**

Max Airflow

### Electrical Specifications

Parameter	Value
Voltage	100-240 V
Frequency	50/60 Hz
Efficiency	35 %

## Operational Characteristics

### Operational Limits

- Noise Level < 92 dB
- Spark Grade < 2
- Temperature Rise 115 K

## Dimensions

### Physical Dimensions

Measurement Point	Dimension (mm)
Outer Diameter	142 ± 0.5
Inner Base Diameter	44 ± 0.5
Overall Height	142.5 ± 1
Segment Height	41 ± 0.5
Top Diameter	78 ± 0.5
Top Width	123 ± 1