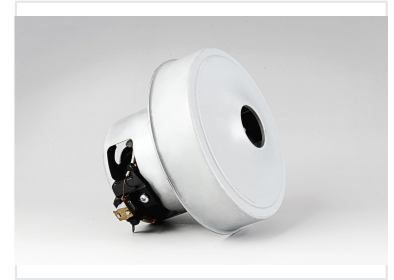
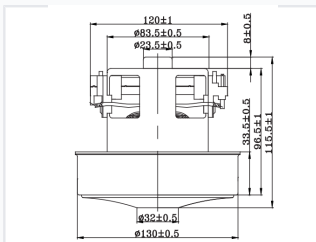


Vacuum Cleaner Motor

This vacuum cleaner motor is designed for efficient and reliable operation. It features a robust construction with a metal housing for durability and heat dissipation.



ADDITIONAL IMAGES



Overview

High-Performance Vacuum Cleaner Motor

The HWX-CG03(P) series is a high-performance vacuum cleaner motor engineered for durability and efficient suction. It features a robust metal housing that ensures effective heat dissipation and a long operational lifespan. Designed for seamless integration, it offers versatile power compatibility and high airflow efficiency for demanding cleaning environments.

Performance

Key Performance Metrics

1400 W

Max Input Power

28 Kpa

Max Vacuum Degree

3.3 m3/min

Max Airflow

39 %

Max Suction Efficiency

Electrical Specifications

Electrical Ratings

Parameter	Value
Voltage	100-240 V
Frequency	50/60 Hz
Power Range	1200-1400 W

Operational Safety

Operating Limits

- Noise Level: < 92 dB
- Spark Grade: < 2
- Temperature Rise: 115 K

Physical Dimensions

Physical Dimensions

Measurement	Value (mm)
Overall Height	115.5 ± 1
Top Width	120 ± 1
Base Diameter 1	32 ± 0.5
Base Diameter 2	130 ± 0.5