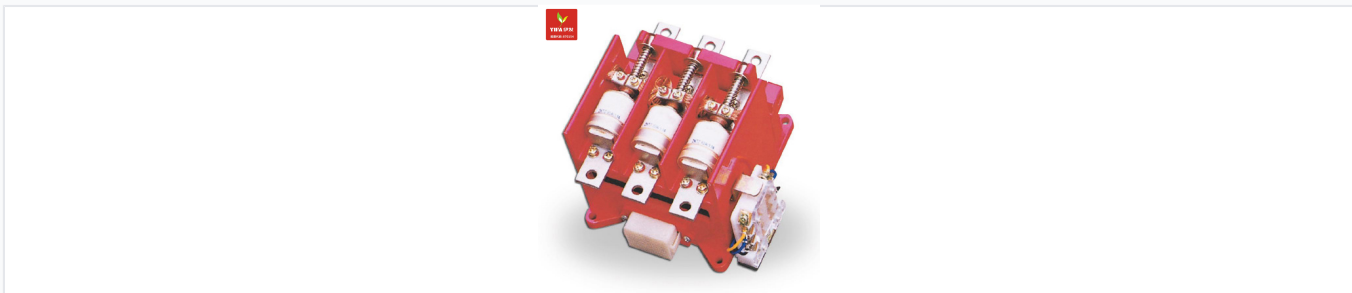


# Vacuum AC Contactor, CKJ5 Series

This low voltage vacuum AC contactor is designed for frequent starting and controlling of AC motors. It utilizes vacuum interrupters for arc extinction, providing reliable performance and long service life.



## Product Overview



High-quality vacuum interrupter construction featuring reliable contact mechanisms.

### CKJ5 Series Low Voltage Vacuum AC Contactor

The CKJ5 series is a high-performance vacuum AC contactor designed for frequent starting and controlling of motors in industrial environments. Utilizing advanced vacuum interrupter technology for arc extinction, it provides reliable switching, high breaking capacity, and a long operational life. Its compact, robust construction makes it ideal for seamless integration into power distribution systems and motor control centers, even in challenging conditions.

## Technical Specifications

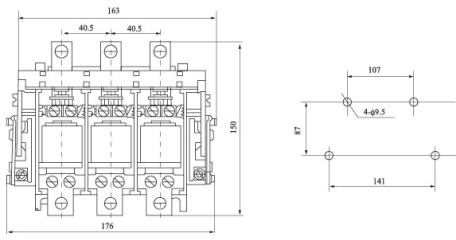
### Common Applications

- AC Motor Control
- Power Distribution Systems
- Motor Control Centers
- Capacitor Switching

Available Rated Currents	125A, 250A, 400A, 630A
Switching Technology	Vacuum Interrupter

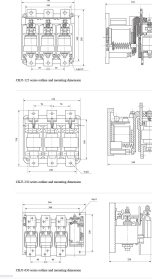
## Dimensional Data

Outline and installation dimension



Detailed outline and installation dimensions for standard CKJ5 units.

Outline and installation dimension



Specific dimensional schematics for the 125A, 250A, and 630A variants.

## Installation Parameters

Model	Mounting Hole Horizontal (mm)	Mounting Hole Vertical (mm)
CKJ5-125	107	87
CKJ5-250	160	70
CKJ5-630	220	160