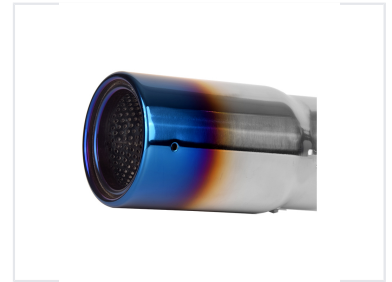
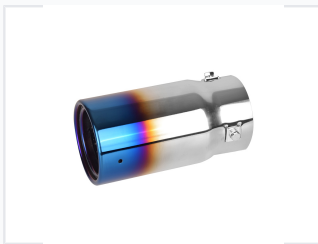


Universal Stainless Steel Exhaust Muffler Tip

This universal car exhaust muffler tip is made of high-quality stainless steel with a polished finish and a blue-burnt end. It is designed for easy installation with included adjustable clamps and enhances the vehicle's exhaust system aesthetics and performance.



ADDITIONAL IMAGES



Product Overview

Universal Stainless Steel Exhaust Muffler Tip

This premium exhaust muffler tip is designed to enhance both the aesthetics and performance of your vehicle's exhaust system. Constructed from high-quality #201 or #304 stainless steel, it features a durable, corrosion-resistant build with a striking blue-burnt finish. The design incorporates a perforated inner core for optimized exhaust flow and sound modulation, making it a versatile upgrade for various automotive applications.

Technical Specifications

Dimensions

80 mm Inner Diameter (ID)	89 mm Outer Diameter (OD)	178 mm Overall Length (OL)
-------------------------------------	-------------------------------------	--------------------------------------

Material

Stainless Steel #201 • Stainless Steel #304

Compatibility

Compatible Models

- 2010-2016 TOYOTA PRADO

Features

Key Features

Corrosion-resistant, Polished finish, Blue-burnt end, Perforated inner core, Easy installation