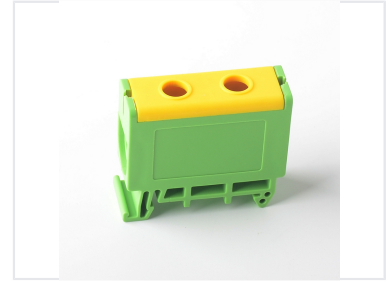


Unipolar High Current Distribution Terminal Block

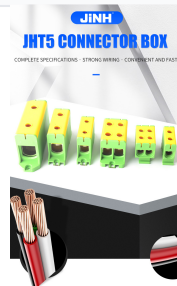
This unipolar distribution terminal block is designed for high-current applications. It provides secure connections for conductors in electrical power distribution.



ADDITIONAL IMAGES



Product Overview



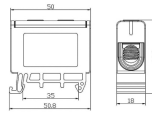
Professional-grade high-current distribution blocks for electrical power cabinets.

Unipolar High-Current Distribution Terminal Block

Designed for robust electrical power distribution within industrial cabinets, these unipolar terminal blocks offer secure and reliable connections for copper and aluminum conductors. Built from durable Nylon(PA) materials, they feature efficient DIN rail mounting and hexagonal screw terminals for high-integrity installations. These components are engineered to withstand demanding environments with a wide operating temperature range and high voltage capacity.

Technical Specifications

Material Nylon(PA)
Wire Section Cu:2.5-50mm² Al:6-50mm²
Installation C45 Din Rail(TH35-7.5)
Type of Screw Inner Hexagon Screws
Working Temperature -40°C +105°C



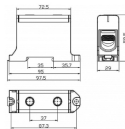
PRODUCT CODE	物料	No. of contacts	Package (P)	Current (Amp)
JHT5-50-PE	聚酰胺50(14)铜铝	1 pole	800	16 / 145A
JHT5-50-4T	聚酰胺50	Al/Cu		

Detailed specifications and dimensional layout for JHT5-50 series blocks.

Mounting Standard	C45 DIN Rail (TH35-7.5)
Working Temperature	-40°C to +105°C
Voltage Rating	800 V
Housing Material	Nylon (PA)

Performance Data

Material Nylon(PA)
Wire Section 35-150mm²
Installation C45 Din Rail(TH35-7.5)
Type of Screw Inner Hexagon Screws
Working Temperature -40°C +105°C



PRODUCT CODE	物料	No. of contacts	Package (P)	Current (Amp)
JHT5-150-PE	聚酰胺150(14)铜铝	1 pole	800	32 / 290A
JHT5-150-4T	聚酰胺150	Al/Cu		

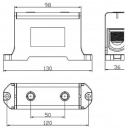
Technical data and dimensions for JHT5-150 series high-current terminals.

Featured Ratings by Model

Model	Wire Range (mm ²)	Current (Cu/Al)
JHT5-50	2.5-50	160A / 145A
JHT5-150	35-150	320A / 290A
JHT5-240	35-240	425A / 380A

Compliance and Features

Material Nylon(PA)
Wire Section 35-240mm²
Installation C45 Din Rail(TH35-7.5)
Type of Screw Inner Hexagon Screws
Working Temperature -40°C +105°C



PRODUCT CODE	物料	No. of contacts	Package (P)	Current (Amp)
JHT5-240-PE	聚酰胺240(14)铜铝	1 pole	800	42 / 380A
JHT5-240-4T	聚酰胺240	Al/Cu		

Technical layout and performance ratings for the JHT5-240 model.

Key Features

Inner Hexagon Screws, 1-Pole Configuration, DIN Rail Compatible, Copper and Aluminum Compatible