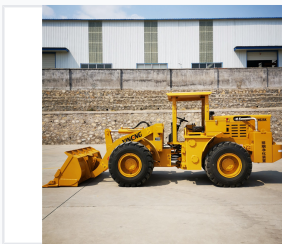


Underground Mining Loader

This underground mining loader is designed for efficient material handling in confined spaces. It features a compact design, a powerful hydraulic system, and a durable bucket.



ADDITIONAL IMAGES



Product Overview

Robust Underground Mining Performance

The YN926K underground mining loader is engineered for high-efficiency material handling in confined environments. It features a powerful diesel engine with an integrated exhaust purification system, ensuring both high performance and environmental compliance. Designed with safety and durability in mind, the machine includes a high-strength protective shed and a load-sensing hydraulic steering system for superior maneuverability.

Performance Metrics

Rated Load

2000 kg
Rated Load

0.7 m³
Bucket Capacity

55 kN
Max Breakout Force

Technical Specifications

General Dimensions

Dimension	Value
Overall Length/Width/Height	5760 x 1910 x 2370 mm
Operating Weight	6000 kg
Dumping Height	2220 mm

Engine & Power

- Engine Type: LR4B3-G92X1A-U2
- Rated Power: 60kW @ 2200rpm
- Equipped with smoke exhaust purification device

Tires 16/70-20

Operational Features

Operational Capabilities

Load Sensing Steering, Single Pump Split Flow Hydraulic System, High-Strength Protective Shed, 30° Grade Ability