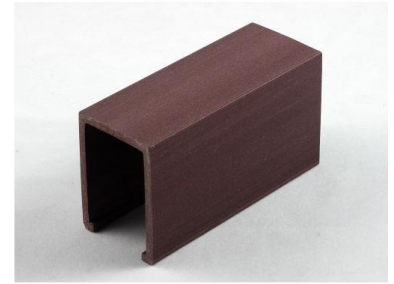


U-Shaped Composite Channel Profile

This U-shaped channel profile is made from a composite material. It features a rectangular cross-section with a central open channel, designed for sliding or guiding applications.



Product Overview

U-Shaped Composite Channel Profile

This U-shaped composite channel profile is engineered for precision sliding and guiding applications, making it an ideal choice for track and rail systems. Featuring a textured, wood-grain-like surface finish, it offers both aesthetic appeal and robust material performance. The design includes a rectangular cross-section with a central open channel and protective side lips for secure engagement.

Physical Characteristics

Shape Type	U-Shaped
Surface Texture	Wood-grain effect

Design Features

Key Features	Rectangular cross-section, Central open channel, Integrated side lips, Sliding track application
--------------	--------------------------------------------------------------------------------------------------

Application

Recommended Use

- Linear guide rails
- Sliding door mechanisms
- Component housing
- Edge protection