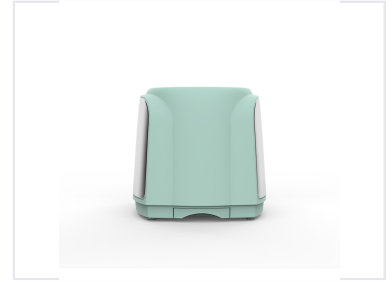


Two-Slice Electric Toaster with Browning Control

This electric toaster is designed for toasting two slices of bread simultaneously. It features adjustable browning settings, including cancel, defrost, and reheat functions.



ADDITIONAL IMAGES



Product Overview

Professional Two-Slice Toaster

This high-performance two-slice toaster combines a sleek retro aesthetic with modern kitchen convenience. Featuring a cool-touch exterior and a glossy stainless steel side panel, it ensures safe operation while providing a premium look. With versatile browning controls and dedicated functions for defrosting and reheating, this unit is designed for reliable, everyday performance in any professional or hospitality environment.

Technical Specifications

Power Performance

700 W
Max Power

240 V
Max Voltage

Voltage Support

AC 220-240V, AC 100-120V

Features

Multifunction Settings

- Defrost
- Reheat
- Cancel

Safety & Design

Cool Touch Exterior • Anti-slip Feet • Auto Shut Off • Auto Pop Up

Maintenance & Convenience

Cleaning

Slide-out crumb tray for easy access and cleaning

Storage

Integrated cord storage under base