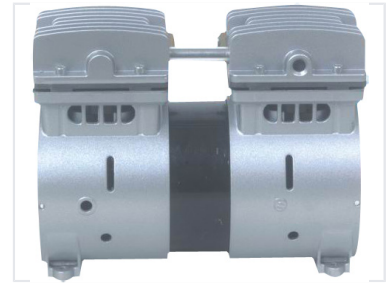


Twin-Cylinder Industrial Vacuum Pump

This twin-cylinder vacuum pump is designed for industrial applications. Its aluminum alloy heads and cylinders ensure efficient heat dissipation.



Product Overview

Twin-Cylinder Industrial Vacuum Pump

The CL3 industrial vacuum pump is a high-performance twin-cylinder unit engineered for demanding vacuum applications. It features a robust construction utilizing aluminum alloy heads and cylinders, which ensures excellent heat dissipation and operational longevity. Designed for reliability, the pump is directly coupled to an electric motor to minimize maintenance requirements while providing consistent industrial-grade performance.

Technical Specifications

Model Series	CL3
Configuration	Twin-Cylinder
Construction Material	Aluminum Alloy Heads, Aluminum Alloy Cylinders
Coupling Type	Direct-Coupled