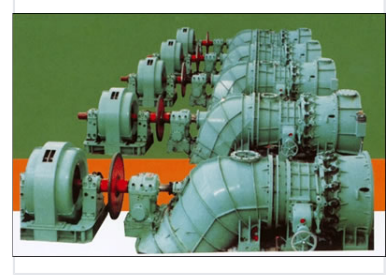


Tubular Water Turbine Generator

High-efficiency tubular water turbine generating unit designed for low head hydropower applications. This turbine features a compact design, optimized hydrodynamics, and robust construction for reliable power generation.



Product Overview

High-Efficiency Low-Head Power Generation

The Tubular Water Turbine Generator is expertly engineered for low-head, high-flow applications typical of plain, hilly, and coastal regions. By utilizing a compact design, it offers a significant reduction in excavation requirements and overall project investment compared to vertical Kaplan units. This solution provides a high-efficiency power generation platform that optimizes both civil construction costs and equipment procurement.

Technical Specifications

Key Performance Metrics

250 KW

Minimum Capacity

8000 KW

Maximum Capacity

2 m

Minimum Head

30 m

Maximum Head

Runner Diameter

1.2m - 4.5m

Economic Advantages

Project Investment Savings

Category	Savings Range
Hydropower Station Civil Works	10% - 20%
Equipment Investment	5% - 10%

Key Features

Key Advantages

- Optimized for low head and large flow applications
- Higher efficiency across a wide range of operating conditions
- Reduced building excavation requirements
- Lower capital expenditure for water conservancy projects

Suitable Environments

Plains, Hills, Coastal regions