

Truck Mounted Concrete Boom Pump, 43m Reach

This truck-mounted concrete boom pump features a 43-meter, 5-section boom for flexible operation. The pump delivers concrete at high volumes and pressures for rapid material distribution.



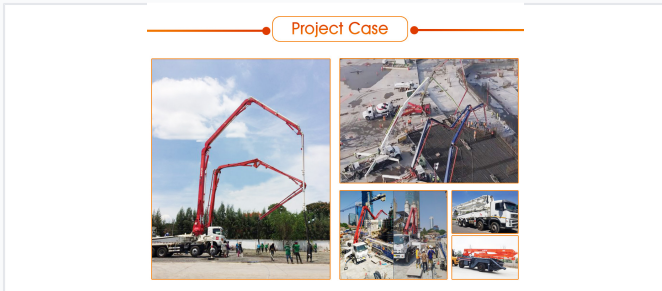
ADDITIONAL IMAGES



Product Overview



The 43m reach truck-mounted boom pump designed for high-performance concrete placement.



Versatile performance in high-rise construction and infrastructure projects.

High-Efficiency Concrete Boom Pump

The 43m reach truck-mounted concrete boom pump is engineered for high-performance concrete placement in large-scale construction, high-rise buildings, and infrastructure projects. It features a 5-section boom system for exceptional reach and maneuverability, paired with a robust hydraulic system for reliable, high-volume delivery. Designed for both durability and efficiency, the unit integrates advanced energy-saving technology, precise control systems, and wear-resistant components to maximize productivity and lower operational costs.

Technical Specifications

Vertical Reach	43 m
Horizontal Reach	39 m
Slewing Angle	±270°
Max Theoretical Output (Low/High)	150/85 m ³ /h
Max Theoretical Pressure (Low/High)	5.9/10.7 MPa
Hydraulic System Pressure	32 MPa
Hopper Capacity	700 L

Performance Features



Advanced hydraulic system with one-button high/low pressure switching and vibration control.



Extreme wear-resistant technology applied to delivery components to extend service life.



Intelligent control system featuring real-time self-diagnostic monitoring and energy-saving technology.

Wear Resistance Specifications

- Double-layer composite elbows extending service life by 50%
- High-strength alloy glass plate and cutting ring
- Special heat-treatment on delivery pipes

Key Performance Technologies

Boom Anti-Vibration Technology, Self-Adaptive Energy Saving, One-Button Twin Piston Return, High/Low Pressure Switching

Chassis and Dimensions

Total Weight	32850 kg
Dimensions (L×W×H)	11750×2500×4000 mm
Wheelbase	4800+1400 mm