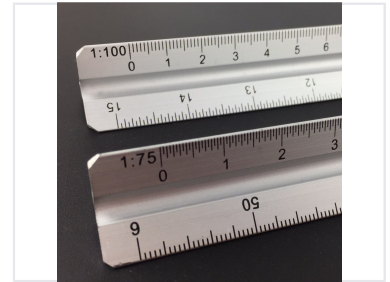
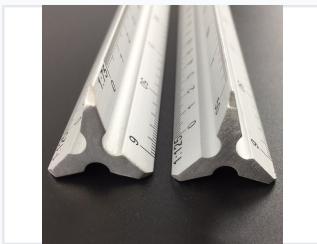


Triangular Aluminium Scale Ruler

This triangular ruler is made from durable aluminium. It features multiple scales for accurate measurements and is ideal for technical drawings and detailed plans.



ADDITIONAL IMAGES



Product Overview

Professional Drafting Tool

This triangular scale ruler is precision-engineered for architects, engineers, and designers who require high-accuracy measurements for technical drawings and blueprints. Constructed from durable aluminium, it is designed to withstand the rigors of professional drafting environments while maintaining clear, easy-to-read markings. With multiple integrated scales, this tool facilitates efficient scaling and conversion for a wide variety of drafting projects.

Physical Specifications

Available Lengths

- 150
- 300

Material

Aluminium

Technical Features

Ideal For

Architectural Plans • Technical Drawings • Blueprints • Engineering

Design

Triangular

Included Scales

1:75, 1:100, 1:125