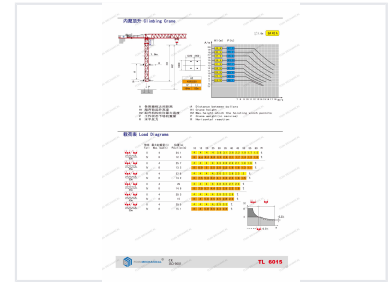
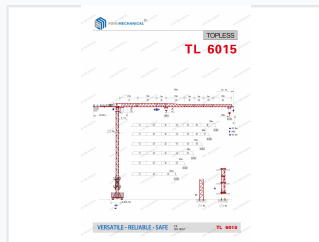
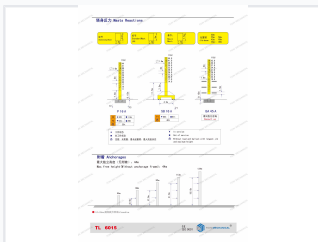


# Topless Tower Crane with 8-25 Ton Capacity

This topless tower crane features easy assembly/disassembly due to the absence of a tower cap structure or pull rod. Its modular structure and lower overall height allow for easier installation on constricted construction sites.



## ADDITIONAL IMAGES



## Overview

### Versatile Topless Tower Crane

The TL6015 topless tower crane is a highly versatile and safe lifting solution designed for complex construction projects. Its modular design ensures easy assembly and disassembly, while the compact footprint makes it particularly well-suited for operation in confined urban job sites. With flexible jib configurations and robust load-bearing capabilities, this crane offers reliability for various lifting requirements.

## Performance Metrics

### Rated Lifting Capacities

**8 t**

Max Capacity

**61.7 m**

Max Jib Length

**44 m**

Max Free Height

### Standards & Certifications

CE, ISO 9001

## Technical Specifications

### Crane Base Dimensions

4.5m x 4.5m

### Standard Mast Type

L46

## Load Configurations

### Typical Load Capacity

Reach	Capacity
60m	1.5t
55m	1.6t
45m	2.0t
40m	2.4t
35m	2.8t
30m	3.3t

## Operational Details

### Key Features

- Modular design for rapid deployment
- Climbing mechanism for high-rise building progress
- Topless design for reduced interference in tight spaces
- Multiple anchorage configurations available