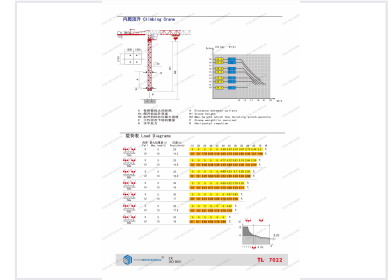
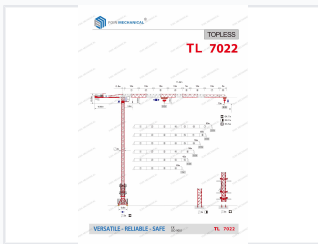


Topless Tower Crane with 25-ton Capacity

This tower crane features a topless design, eliminating the need for a tower cap or pull rod, which simplifies both assembly and disassembly. With greater structural strength, this crane has fewer parts, making it more convenient to transport.



ADDITIONAL IMAGES



General Overview

Topless Tower Crane TL7022

The TL7022 is a versatile topless tower crane engineered for demanding construction projects requiring high lifting capacities and operational efficiency. With a maximum jib length of 71.48 meters and a top load capacity of 10 tons, it provides reliable performance in various height configurations. The crane features advanced control systems and robust weather-resistant construction, making it suitable for stationary, climbing, and traveling applications.

Technical Performance

Performance Metrics

10 t Max Capacity	71.48 m Max Jib Length	64.7 m Max Freestanding Height
-----------------------------	----------------------------------	--

Control System Types

AI control, VFD control, Ordinary speed control

Operational Configuration

Use Schemes

- Stationary
- Chassis weight
- Traveling Chassis
- Internal climbing

Power Requirements

- 220V/60Hz
- 380V/55Hz
- 400V/50Hz
- 440V/60Hz

Quality & Compliance

Certifications

CE • ISO • GOST • CU-TR

Finish Specifications

Component	Specification
Paint Thickness	140 µ
Paint Type	UV-resistant, weather-resistant polyurethane
Ladders & Platforms	Hot-dip galvanized

Service & Terms

Business Terms

Term	Details
Warranty	16 months localized
Delivery Time	10-35 days
MOQ	1 set
Spare Parts	Free provided