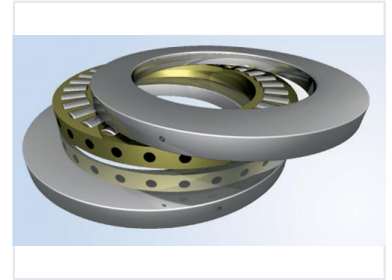


Thrust Ball Bearing for Axial Load Support

This rotary bearing is designed to support axial loads. It is suitable for low-speed applications such as swivels and machine tool spindles.



Product Overview

High-Performance Axial Load Support

This thrust ball bearing is engineered specifically to handle high axial loads in low-speed applications. Constructed with two hardened steel or ceramic washers and a precision-engineered cage, it ensures smooth rotation and structural integrity under significant pressure. It is an ideal component for machinery requiring reliable axial support, such as swivels, casters, and machine tool spindles.

Technical Specifications

Key Features

- Two-washer race design
- Ball-spacing cage/retainer
- Optimized for low-speed rotation
- High axial load capacity

Bearing Type	Thrust Ball Bearing
Load Direction	Axial
Race Material	Hardened Steel, Ceramic

Applications

Typical Applications

Swivels • Casters • Machine Tool Spindles