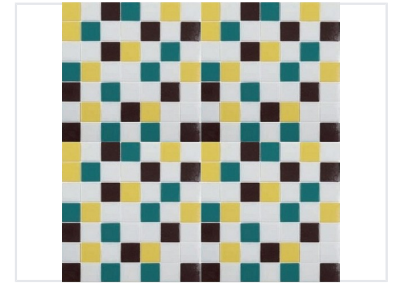
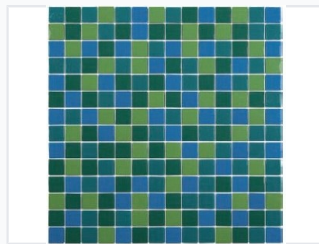
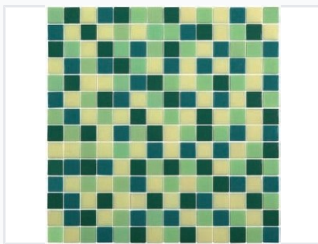


# Thin Kerf Hot Pressed Saw Blade

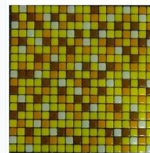
This blade features a collar for increased cutting stability. The ultra-thin kerf design provides a consistent cutting edge that minimizes chips and maximizes efficiency.



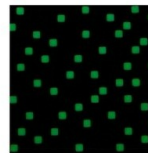
## ADDITIONAL IMAGES



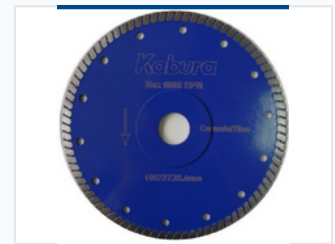
2. Jady mosaic(YS154003G)



Day



Night



## Product Overview

### Precision Cutting Solution

This hot pressed thin kerf saw blade is engineered for high-performance cutting applications. It is specifically designed to deliver clean, precise cuts with minimal chipping on ceramic, porcelain, and glazed tile materials. Its durable construction ensures an extended service life, making it a reliable choice for both professional contractors and DIY enthusiasts.

## Technical Specifications

### Available Dimensions

Diameter (mm)	Bore (mm)	Segment Dimension (mm)
115	22.23	7.5*1.4
125	22.23	7.5*1.4
180	25.4/22.23	7.5*1.5
200	25.4/22.23	7.5*1.6
230	25.4/22.23	7.5*1.8

### Compatible Materials

Ceramic Tile, Porcelain Tile, Glazed Tile