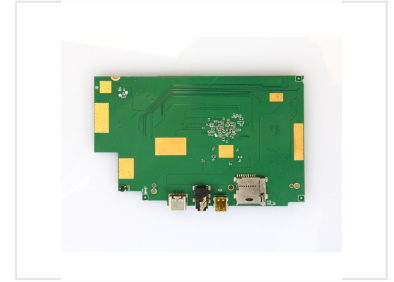


Tablet Motherboard PCBA

This printed circuit board assembly (PCBA) is designed for tablet devices. It integrates circuits, connectors, and passive components for core functionality.



ADDITIONAL IMAGES



Product Overview

Core Tablet PCBA Module

This high-performance printed circuit board assembly is designed as the central processing unit for tablet devices. The module integrates essential components including memory modules and advanced controllers to ensure stable device functionality. It features comprehensive connectivity options to support modern peripherals and data input/output requirements.

Technical Specifications

Model and Revision	MA-MPEG-JIOH-010 V2.0
Construction Details	Surface-mount technology, Green PCB substrate, Gold-plated contact pads

Connectivity

Interface Connectors

- USB-C connector
- Audio jack
- USB-A port
- MicroSD card slot

Performance

Key Functional Components

Integrated Memory • Data I/O Controllers • Audio Processing Interface