

# Super Thin Kerf Saw Blade for Stainless Steel

This super-thin kerf saw blade is designed for cutting stainless steel. It delivers fast cuts, high durability, and excellent straight running cuts with a burr-free finish.



## ADDITIONAL IMAGES



## Product Overview

### Professional Stainless Steel Cutting Solution

This super thin kerf saw blade is engineered for precision, efficiency, and longevity in professional stainless steel cutting applications. Designed for use with low-speed cutting machines, it offers a clean, burr-free finish while significantly reducing thermal buildup and material waste. Its advanced tooth geometry and robust ceramic-metal construction ensure stable, straight cuts, making it a highly productive alternative to traditional abrasive grinding wheels.

## Technical Specifications

### Maximum Operating Speed

**5500 min-1**

Max RPM

### Dimensions

Parameter	Value	Unit
Outer Diameter	180	mm
Blade Thickness	1.8	mm
Kerf Width	1.4	mm
Bore Size	20	mm
Tooth Count	60	

## Performance

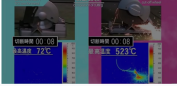
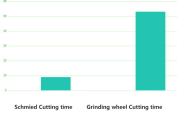
### 1 FAST CUT

Reduces cutting resistance with unique design in thin kerf and saw body. It brings smooth & sharp cut, and improves workability at job site.

Unique thin kerf design reduces cutting resistance for smooth, sharp performance.

### INCREASE FIVE TIMES WORKING EFFICIENCY

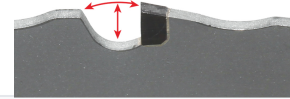
watch the video and acknowledge the work efficiency



Comparison showing reduced heat generation and superior cutting efficiency.

### 3 EXCELLENT STRAIGHT RUNNING CUT

Unique tooth geometry (wide and shallow pocket) is efficient in making a balance on the blade and improving stability in straight running cut.



Wide and shallow pocket design enhances stability during cutting.

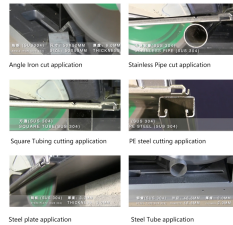
### Key Advantages

Fast Cut, High Durability, Burr-free Finish, Minimal Heat Generation, Straight Running Cut

## Compatibility

### Apply for various metal materials

Angle Iron Stainless Pipe Stainless Plate Stainless Rebar



Suitable for diverse stainless steel profiles including pipes, plates, and angle iron.

### Compatible Materials

- Stainless Steel Angle Iron
- Stainless Steel Pipe
- Stainless Steel Square Tubing
- Stainless Steel Plate
- Stainless Steel Rebar

## Safety & Usage

### Important Safety Warnings

No Disc Grinders • Use Protective Eyewear • Low-Speed Machines Only • Review Manual Before Use