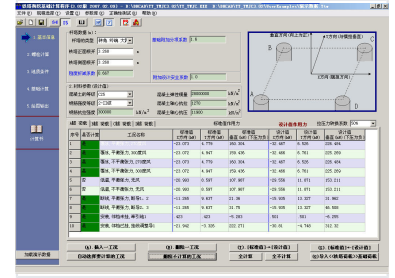


Structural Engineering Analysis Software

This software performs structural engineering analysis. It calculates load conditions and design parameters for tower foundations, with options for material properties and result visualization.



Overview

Advanced Tower Foundation Calculation Software

This specialized structural engineering software is designed for the rigorous analysis and design of tower foundations. It supports professional workflows including material property management, comprehensive load input, and detailed calculation visualization. The system empowers engineers to simulate diverse environmental conditions, such as ice coating and wind stress, ensuring structural integrity and compliance with design parameters.

System Capabilities

Engineering Features

- Tower type configuration (Terminal, Corner, Large span)
- Bolt connection calculation
- Geological condition integration
- Foundation base attachment factor calculation
- Automatic load condition selection

Supported Modules

Tower Foundation Analysis, Load Condition Simulation, Material Property Evaluation, Graphic Result Output

Technical Standards

Standard Material Parameters

Parameter	Value	Unit
Concrete Elastic Modulus	28000000	kN/m ²
Concrete Tensile Strength	1270	kN/m ²
Concrete Compressive Strength	11900	kN/m ²
Steel Tensile Strength	300000	kN/m ²

Safety Coefficients

1.6 Foundation Attachment Factor	0.667 Stiffness Reduction	1 Safety Factor
--	-------------------------------------	---------------------------