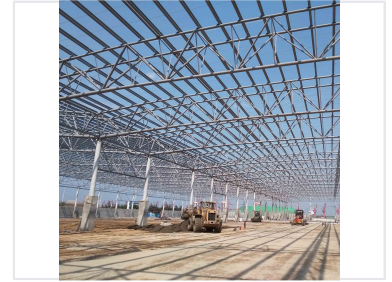


Steel Structure Plant Warehouse

This steel structure is suitable for use as a plant or warehouse. The structure incorporates durable materials and efficient construction techniques.



ADDITIONAL IMAGES



Project Overview

Industrial Steel Solutions

These professional-grade steel structure buildings are designed for versatility and durability in large-scale industrial applications. Whether configured for R&D facilities or heavy smelting plants, the structural design emphasizes robust support and efficient space utilization. The modern engineering allows for large floor areas and complex multi-facility integration tailored to operational needs.

Key Metrics

Yantai Project Total Area

130207 sqm

Total Building Area

Building Height

21 m

Rizhao Xinge Plant Area

54600 sqm

Technical Specifications

Application Scope

- R&D Centers
- Automobile Manufacturing
- Smelting Plants
- Logistics Warehousing
- Office Complexes

Structural Material

Steel Skeleton, Concrete Composite