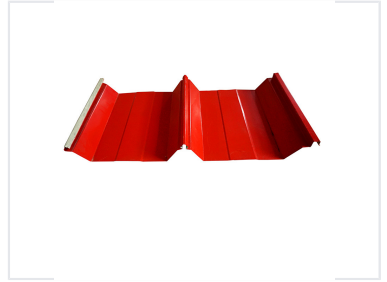


Steel Roof Panel Roll Forming Machine

This rolling mill is designed for the efficient production of joint-hidden steel metal roof panels, suitable for large-span construction. It features a robust frame and an integrated control system for automated operation.



ADDITIONAL IMAGES

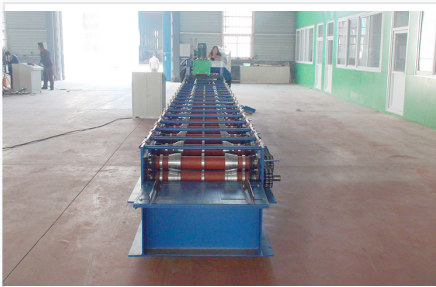


Overview

Automated Join-Hidden Roof Panel Production

This automatic roll forming machine is engineered for the efficient, high-volume production of joint-hidden steel roof panels. Designed for large-span construction projects, it creates durable, weather-tight roofing solutions with a seamless, aesthetically pleasing finish. The system integrates a manual decoiler, precision forming rollers, hydraulic cutting, and PLC control to ensure consistent panel quality and operational reliability.

Technical Specifications



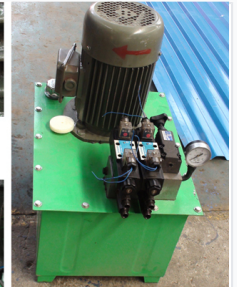
Precision forming stations for consistent panel profiles



Gradual metal shaping through multiple roller passes



<Hydraulic Pump>



Robust hydraulic power unit for consistent cutting operations

Production Speed	12 m/min
Roller Stands	17
Main Motor Power	3 kW
Hydraulic Pump Power	3 kW
Side Panel Thickness	14 mm
Main Frame	350H Steel
Power Supply	380V / 50Hz / 3 Phase

Materials and Components

Roller Material	Carbon Steel 45#
Cutting Blade Material	Cr12 with quenched treatment (60-62 HRC)
Compatible Material	Color Steel Plate

System Features



PLC control system for precise production monitoring

Included Components

- Manual decoiler
- Main roll forming machine
- Post-cut hydraulic system
- PLC control system
- Stacking table

Control System	PLC Control (Mitsubishi/Delta/Others)
----------------	---------------------------------------