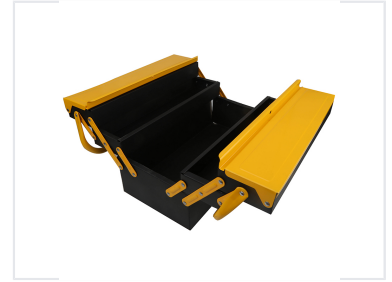


# Steel Cantilever Tool Box with Multiple Trays

This steel cantilever tool box features multiple trays for organized tool storage. The robust construction and cantilever design provide durability and easy access to all compartments.



## Product Overview

### Professional Cantilever Steel Tool Box

This robust cantilever tool box is engineered for professionals and DIY enthusiasts who require efficient organization and durability. The innovative cantilever design ensures all compartments are easily accessible, allowing for quick retrieval of tools during tasks. Constructed from high-quality steel, this tool box is built to withstand rigorous use in demanding workshop environments.

## Key Features

Design Features	Cantilever Design, Multiple Trays, Heavy Duty Steel
-----------------	---

## Technical Specifications

Dimensions	40 x 20 x 20 cm
Net Weight	3.68 KG