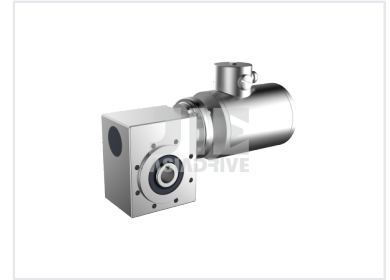


# Stainless Steel Worm Gear Reducer

This stainless steel worm gear reducer is easy to clean and requires minimal maintenance. It is designed for use in the food, medicine, marine, and water supply industries.



## Product Overview

### High-Performance Stainless Steel Worm Gear Reducer

This stainless steel worm gear reducer is engineered for high-precision, durability, and corrosion resistance in demanding industrial environments. Constructed from premium materials, it ensures long-term reliability and smooth operation. Its compact design facilitates seamless integration into existing machinery, providing high torque transmission for varied industrial applications.

## Technical Specifications

Model Range	40~90
Ratio Range	7.5~100

## Performance Metrics

### Input Power

**0.09 kW**

Minimum Power

**4 kW**

Maximum Power

### Output Torque

**19 N.m**

Minimum Torque

**458 N.m**

Maximum Torque

## Features

Material Construction	Stainless Steel, Corrosion Resistant
-----------------------	--------------------------------------