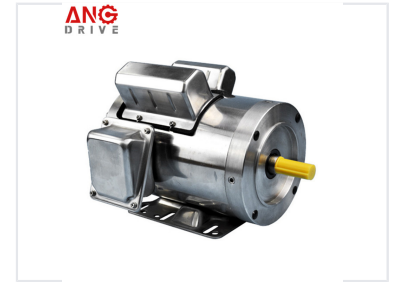
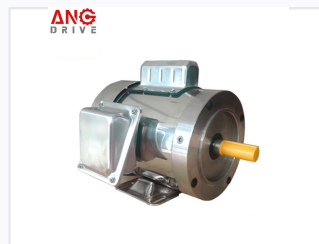
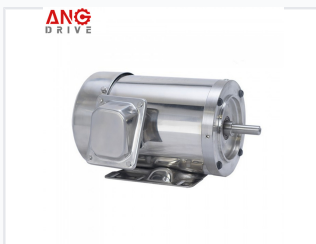


# Stainless Steel Washdown Electric Motor

This electric motor features full stainless steel external surfaces. It is designed for low noise, low vibration, and frequent washdown, making it suitable for food processing, packaging, and corrosive environments.



## ADDITIONAL IMAGES



## Overview



## High-Performance Washdown Motors

Engineered for excellence in harsh, corrosive environments, these stainless steel motors provide a reliable solution for food processing, packaging, and outdoor industrial applications. Featuring a completely smooth surface, the motor is designed for easy sanitation and frequent washdown protocols. With a low-noise and low-vibration construction, it ensures operational stability while maintaining a lightweight profile.

## Performance Data

### Pole Configuration

- 2
- 4
- 6
- 8

### Power Rating

1/4HP - 30HP

### Voltage Compatibility

(208-230) 230/460V

## Technical Specs

Protection Class IP69	
Housing Material	Stainless steel 304
Cooling	TENV, TEFC
Mounting Options	B14, B3, B5, B35, B34

## Operational Limits

Ambient Temperature	
<b>-15 °C</b> Min Temp	<b>40 °C</b> Max Temp
Max Altitude	1000 m