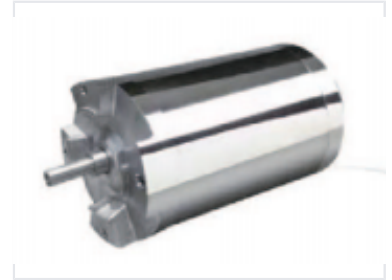
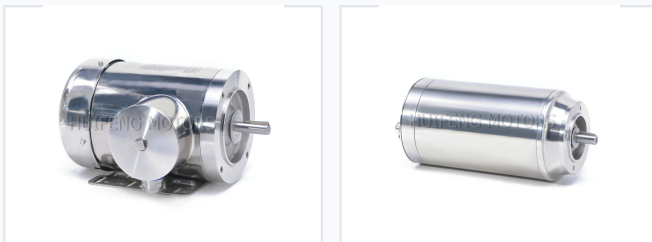


Stainless Steel Three-Phase Induction Motor

This stainless steel three-phase induction motor is engineered for durability and efficient performance in demanding industrial settings. Its robust construction ensures reliable operation in environments where hygiene and corrosion resistance are critical.



ADDITIONAL IMAGES



Overview

Premium Stainless Steel Induction Motors

The HYW Series stainless steel three-phase induction motors are engineered for demanding environments such as food processing and pharmaceutical facilities. These units feature a totally enclosed, non-ventilated design with a completely smooth surface to ensure excellent hygiene and ease of cleaning during frequent washdowns. Built for reliability, they offer superior anti-corrosion properties and are compatible with inverter duty operation for precise control.

Technical Specifications

Stainless Steel Grade

304 • 316L

Mounting Configurations

- IM B3
- IM B5
- IM B14
- IM B35
- IM B34

Efficiency Standard

IE3, IE4

Insulation Rating

Class F

Duty Cycle

S1

Enclosure

Totally Enclosed Non-Ventilated (C410)

Performance Metrics

Voltage Options

- 230/400V
- 277/480V
- 208-230/460V

Frequency

50 Hz

Frequency

60 Hz

Frequency

Inverter Duty Operation

Yes

Mechanical Data

Bearing Specifications

Position	Bearing Model
Drive End (DE)	6205
Non-Drive End (NDE)	6203

Approximate Weight

35 lbs