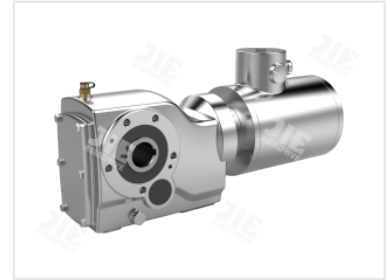


Stainless Steel Gearmotor for Food Industry

This stainless steel gearmotor meets IP69K certification standards, making it suitable for the food industry. It is easy to clean, offers a long service life, and requires minimal maintenance.



Product Overview

High-Performance Stainless Steel Gearmotor

Designed specifically for the food and pharmaceutical industries, this stainless steel gearmotor offers exceptional corrosion resistance and durability in environments requiring rigorous sterilization. Its robust construction withstands harsh cleaning agents, ensuring compliance with high hygiene standards. Engineered for reliability, it provides efficient power transmission and precise speed control to minimize downtime and maximize productivity.

Performance Metrics

Key Performance Indicators

5.5 kW

Max Input Power

910 N.m

Max Output Torque

Technical Specifications

Model Range	37~67
Gear Ratio Range	3.98~145.14
Input Power Range	0.18~5.5 kW
Output Torque Range	12~910 N.m

Application & Compliance

Key Features

Stainless Steel Construction • Corrosion Resistant • Sterilization Ready • Low Maintenance

Suitable Industries

Food Processing, Pharmaceutical, Sterile Environments