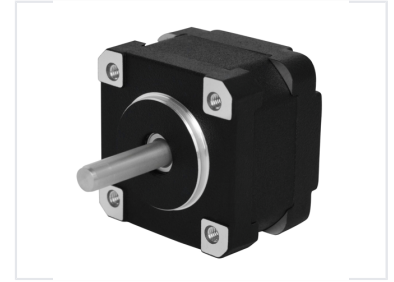


Square Body Stepper Motor

This high-precision stepper motor is designed for accurate and reliable motion control. The compact square body features mounting holes for easy integration into robotics, automation, and precision positioning systems.



Overview

Professional Grade Stepper Motor

The VHSM35 is a high-precision stepper motor engineered for demanding automation and robotics applications. Featuring a robust square body design and a standard 1.8° step angle, it offers reliable and accurate motion control. With integrated wiring and standard mounting configurations, it is optimized for seamless integration into various industrial positioning systems.

Performance Metrics

Performance Highlights

14 N.cm

Holding Torque

1.8 °

Step Angle

1.5 A

Rated Current

Electrical Specifications

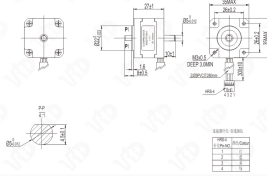
Electrical Properties

Parameter	Value
Rated Current	1.5A
Resistance	1.4 Ω
Drive Mode	2-2
Step Accuracy	$\pm 5\%$

Mechanical Specifications

型号	额定电压	额定功率	额定电流	额定速度	脉冲当量	脉冲频率	脉冲电压	脉冲电流	脉冲功率
VNS555	5.0V	0.6W	0.12A	1.5°	1/20	≤10K	1.5V	1.0A	1.5W

规格参数 Specification



Technical diagram showing dimensions and mounting specifications.

Mechanical Properties

Parameter	Value
Detent Torque	1N.cm
Rotor Inertia	14g.cm ²
Shaft Diameter	Ø5-0.012
Cable Length	300±10 mm

Wiring

Connection Details

- Connector Type: HRS-4
- Wire Colors: Red, Blue, Yellow, Green
- Shielding: Ø5 PVC tube (280mm)