

Sportex TH201 Passenger Car Tire

The Triangle Sportex TH201 UHP tire offers crisp response for mastering the road, even in extreme conditions. Its asymmetric pattern design provides balanced performance in both dry and wet conditions.



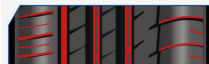
Product Overview

High-Performance UHP Tire

The TH201 is a high-performance passenger car tire engineered to deliver crisp response and master the road even in extreme conditions. Its asymmetric pattern design provides balanced performance in both dry and wet environments. The tire is designed for drivers seeking extreme control, improved ride comfort, and a lower noise level.

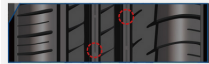
Performance Features

Features & Benefits



Three main central grooves with assisted lateral oblique groove

- To maximize water drainage
- Resulting in good aquaplaning & wet grip performance



Three silencer slots, high angle CL radial groove

- For groove resonance reduction
- Resulting in reduced new and worn tire noise



Asymmetric design with optimized pitch sequence

- For improved management of lateral forces
- Resulting in improved cornering stability

Optimized tread contact patch and large-block design

- For large and even contact surface
- Resulting in improved dry handling performance

Technical breakdown of the asymmetric tread pattern, including water drainage grooves and noise reduction slots.

Wet Weather Performance

- Three main central grooves for water drainage
- Assisted lateral oblique grooves
- Excellent aquaplaning resistance
- Superior wet grip

Noise Reduction Technology

- Three silencer slots
- High angle CL radial groove
- Groove resonance reduction
- Reduced noise levels for both new and worn tires

Handling and Stability

- Asymmetric design with optimized pitch sequence
- Improved management of lateral forces
- Enhanced cornering stability
- Optimized tread contact patch
- Large-block design for even contact surface

Key Metrics

Core Performance Metrics

100 %

Wet Grip Rating

100 %

Dry Handling Rating