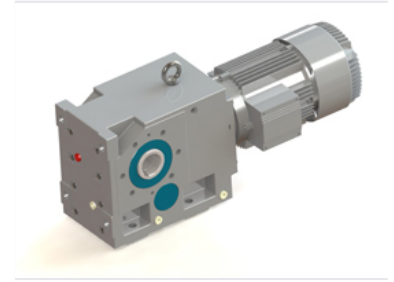


Spiral Bevel Gear Reducer

This spiral bevel gear reducer is designed for robust industrial applications. It features precision-engineered spiral bevel gears within a heavy-duty housing for efficient power transmission.



Overview

KC Series Spiral Bevel Gear Reducer

The KC series spiral bevel gear reducer is engineered for robust industrial applications requiring reliable power transmission. Featuring a heavy-duty housing and precision-machined spiral bevel gears, this unit is built to handle high torque demands. It is designed for seamless integration with directly coupled electric motors, ensuring consistent performance in demanding environments.

Technical Specifications

Gear Type	Spiral Bevel
Construction	Heavy-duty housing, Precision-engineered

Performance

Key Performance Metrics

1 Yes

High Torque Capability

1 Yes

Direct Motor Coupling