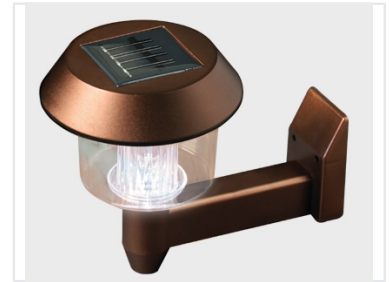


Solar Powered Outdoor LED Wall Light

This outdoor wall light is powered by an integrated solar panel, offering an energy-efficient lighting solution. It is designed for easy installation and automatically activates at dusk, providing ambient lighting for pathways, gardens, or patios.



Product Overview

Energy-Efficient Outdoor Illumination

The XLTD-300WC is a modern, high-performance solar-powered wall light engineered for reliable outdoor illumination. It efficiently harnesses solar energy throughout the day to provide bright, automated lighting for pathways, gardens, and patios after dusk. Designed with a sophisticated copper finish and a durable build, this unit integrates seamlessly into various architectural styles while ensuring long-term weather resistance.

Technical Specifications

Power Source	Integrated Solar Panel
Lighting Source	LED
Operational Modes	Automatic Dusk-to-Dawn Sensor, Hassle-free Operation

Design and Build

Suitable Locations

- Pathways
- Gardens
- Patios
- Building Exterior Walls

Durability

Weather Resistant

Finish	Copper
--------	--------