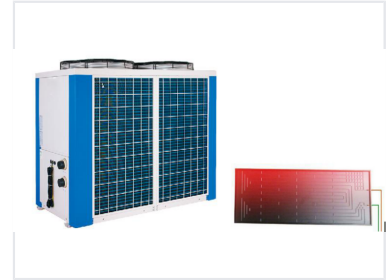


# Solar Heat Pump System for Climate Control and Water Heating

This unit integrates solar thermal collectors with a heat pump to provide heating, cooling, and domestic hot water. The system optimizes energy consumption by utilizing solar energy as the primary heat source, reducing reliance on electricity.



## Overview

### Solar Integrated Climate Control

This high-efficiency solar heat pump system is engineered for professional climate control and domestic hot water production. By integrating solar thermal auxiliary heating with a robust heat pump, the unit minimizes electricity dependency and maximizes thermal output. It provides a scalable, sustainable solution suitable for both residential and commercial applications requiring reliable hot water and thermal regulation.

## Performance Metrics

### Heating Capacity

**35000 W**

Heating Capacity

**8750 W**

Average Input

Solar Auxiliary Power

10000 W

## Water Heating

Hot Water Supply Rate

1000 L/h

Max Hot Water Temperature

55

## Technical Specifications

Refrigerant Type

R410A

Electrical Requirements

380V^50Hz

## Physical Dimensions

### Weight Specifications

Metric	Weight
Net Weight	300
Gross Weight	320

Dimensions (LxWxH)

1530x800x1350 mm