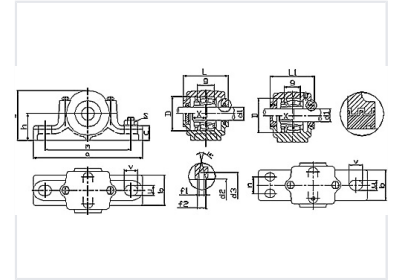


# SN500 Series Plummer Block Bearing Housing

Plummer block bearing housings in the SN500 series are designed for shaft diameters ranging from 20mm to 135mm. These housings are compatible with various bearing types and adapter sleeves.



## Overview

### SN500 Series Plummer Block Housing

The SN500 series represents a robust range of plummer block bearing housings designed for demanding industrial applications. These housings are engineered to accommodate shaft diameters from 20mm up to 135mm, offering versatility for various mechanical setups. Built for reliability, they support a wide array of bearing series, including 1205K through 23230K, and feature compatibility with multiple adapter sleeves and locating rings to ensure precise alignment and secure mounting.

## Technical Specifications

Housing No.	Shaft Dia. (mm)	Dimensions (mm)														Housing No.	Adapter Sleeve	Locating Ring			
		A	B	C	D	E	F	G	H	I	J	K	L	M	N						
SN500-20	20	40	45	50	55	60	65	70	75	80	85	90	95	100	105	110	115	120	2000	H205	SR52x5
SN500-25	25	50	55	60	65	70	75	80	85	90	95	100	105	110	115	120	125	130	2205	H205	SR52x5
SN500-30	30	60	65	70	75	80	85	90	95	100	105	110	115	120	125	130	135	140	2220	H205	SR52x5
SN500-35	35	70	75	80	85	90	95	100	105	110	115	120	125	130	135	140	145	150	2230	H205	SR52x5
SN500-40	40	80	85	90	95	100	105	110	115	120	125	130	135	140	145	150	155	160	2230K	H205	SR52x5
SN500-45	45	90	95	100	105	110	115	120	125	130	135	140	145	150	155	160	165	170	2230K	H205	SR52x5
SN500-50	50	100	105	110	115	120	125	130	135	140	145	150	155	160	165	170	175	180	2230K	H205	SR52x5
SN500-55	55	110	115	120	125	130	135	140	145	150	155	160	165	170	175	180	185	190	2230K	H205	SR52x5
SN500-60	60	120	125	130	135	140	145	150	155	160	165	170	175	180	185	190	195	200	2230K	H205	SR52x5
SN500-65	65	130	135	140	145	150	155	160	165	170	175	180	185	190	195	200	205	210	2230K	H205	SR52x5
SN500-70	70	140	145	150	155	160	165	170	175	180	185	190	195	200	205	210	215	220	2230K	H205	SR52x5
SN500-75	75	150	155	160	165	170	175	180	185	190	195	200	205	210	215	220	225	230	2230K	H205	SR52x5
SN500-80	80	160	165	170	175	180	185	190	195	200	205	210	215	220	225	230	235	240	2230K	H205	SR52x5
SN500-85	85	170	175	180	185	190	195	200	205	210	215	220	225	230	235	240	245	250	2230K	H205	SR52x5
SN500-90	90	180	185	190	195	200	205	210	215	220	225	230	235	240	245	250	255	260	2230K	H205	SR52x5
SN500-95	95	190	195	200	205	210	215	220	225	230	235	240	245	250	255	260	265	270	2230K	H205	SR52x5
SN500-100	100	200	205	210	215	220	225	230	235	240	245	250	255	260	265	270	275	280	2230K	H205	SR52x5
SN500-105	105	210	215	220	225	230	235	240	245	250	255	260	265	270	275	280	285	290	2230K	H205	SR52x5
SN500-110	110	220	225	230	235	240	245	250	255	260	265	270	275	280	285	290	295	300	2230K	H205	SR52x5
SN500-115	115	230	235	240	245	250	255	260	265	270	275	280	285	290	295	300	305	310	2230K	H205	SR52x5
SN500-120	120	240	245	250	255	260	265	270	275	280	285	290	295	300	305	310	315	320	2230K	H205	SR52x5
SN500-125	125	250	255	260	265	270	275	280	285	290	295	300	305	310	315	320	325	330	2230K	H205	SR52x5
SN500-130	130	260	265	270	275	280	285	290	295	300	305	310	315	320	325	330	335	340	2230K	H205	SR52x5
SN500-135	135	270	275	280	285	290	295	300	305	310	315	320	325	330	335	340	345	350	2230K	H205	SR52x5

Technical overview of the SN500 series plummer block housing dimensions and assembly components.

### Weight Range

**1.4 kg**

Minimum Weight

**75 kg**

Maximum Weight

### Shaft Diameter Range

20mm to 135mm (3/4 inch to 5-1/4 inch)

## Compatibility

### Compatible Bearing Series

1205K-1213K, 2205K-22230K, 23218K-23230K

### Compatible Adapter Sleeves

H205-H219, H305-H3130, HE205-HE330, H2318-H2330

### Locating Ring Series

SR52x5, SR270x10

## Dimensions

### Housing Dimensions Reference

Housing No.	Shaft Dia (mm)	D (mm)	Weight (kg)
SN505	20	52	1.4
SN506	25	62	2.15
SN510	45	90	3.75
SN520	90	180	23
SN530	135	270	75