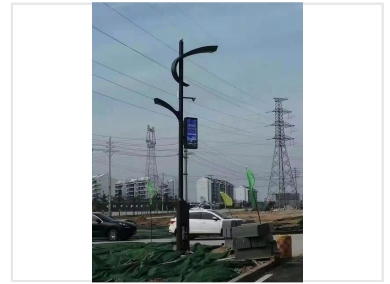
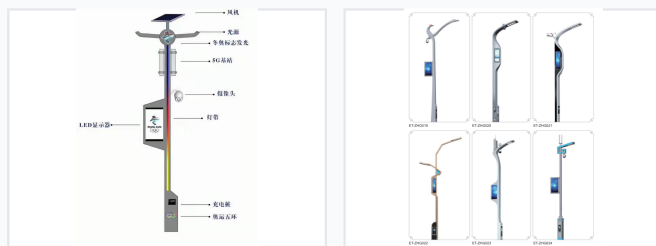


Smart Street Light with Integrated Technology

This smart street light automatically adjusts lighting based on calculated darkness and dawn times, optimizing energy use. It incorporates video surveillance, information LED displays, 5G micro base stations, environmental monitoring, and charging capabilities for comprehensive urban management.



ADDITIONAL IMAGES



Product Overview

Modern Infrastructure for Smart Cities

The Smart Street Light integrates advanced infrastructure into a single unit, replacing traditional lighting with a multifunctional platform. It supports smart city initiatives through features like 5G connectivity, real-time environmental monitoring, and comprehensive security surveillance. This solution serves as a critical carrier for IoT infrastructure, optimizing energy usage while enhancing public safety and information accessibility.

Core Functionalities

Integrated Features

Smart Lighting, 5G Base Station, Video Surveillance, Environmental Monitoring, Information Display, EV Charging, Emergency Help Button

Technical Capabilities

Sensors and Monitoring

- Temperature and Humidity
- Wind Speed and Air Pressure
- PM 2.5
- Noise levels
- Light intensity
- Rainfall and ponding

Connectivity

- 5G Micro base stations
- Wi-Fi Hotspots
- WAN/LAN Integration

Design and Models

Model Variations

ET-ZHG019 • ET-ZHG020 • ET-ZHG021 • ET-ZHG022 • ET-ZHG023 • ET-ZHG024