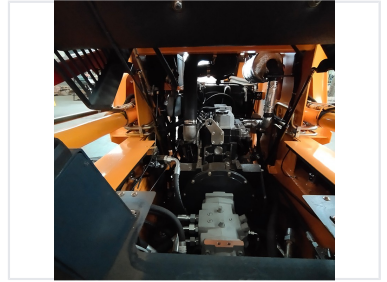
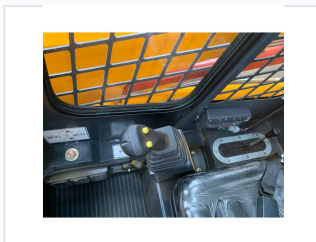


Skid Steer Road Roller Attachment

This skid steer road roller attachment is designed for efficient road basis construction and pavement maintenance. Integrating seamlessly with skid steer loaders, it provides a cost-effective solution for soil compaction and asphalt repair.



ADDITIONAL IMAGES



Overview

Versatile Road Construction Solution

This skid steer road roller attachment is designed for efficient road base construction and pavement maintenance. It integrates seamlessly with skid steer loaders, providing a cost-effective solution for soil compaction and asphalt repair. Featuring robust construction and optimized compaction force, it ensures uniform density and smooth surfaces for small to medium-sized projects.

Performance & Engineering

Engine Compatibility	Perkins, Mitsubishi, Xinchai
Hydraulic System	US Permco Gear Pump
Lift Capability	Vertical lift for maximum capacity at height and reach

Operator Experience

Cabin Comfort & Safety

- 15-20% wider cab space
- Front door seal
- Anti-collision cage
- Seat belt
- Optional seat warmer
- Optional air conditioner

Control System	Italy Hydrocontrol pilot joystick
----------------	-----------------------------------

Maintenance & Usability

Maintenance Design	Upper and back hood access without moving loading arms
Attachment Change	Hydraulic couplers for quick changing