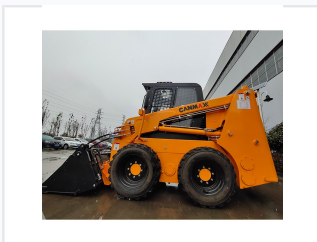


# Skid Steer Loader

This skid steer loader is a versatile machine designed for various construction and earthmoving applications. Its compact design and maneuverability make it ideal for working in confined spaces.



## ADDITIONAL IMAGES



## Overview

### High-Performance Skid Steer Loader

This versatile skid steer loader is engineered for demanding construction and earthmoving tasks, featuring a specialized chassis design that ensures excellent stability and comfort across various working conditions. Equipped with a powerful, fuel-efficient engine and a robust vertical-lift hydraulic system, it maximizes lift capacity and reach for efficient load-and-carry operations. The ergonomic cabin enhances operator safety and productivity, while the quick-change hydraulic coupler system streamlines attachment transitions for increased job site efficiency.

## Performance & Power

Engine Compatibility	Perkins, Mitsubishi, Xinchai
Hydraulic System	US Permco Gear Pump
Lift Configuration	Vertical Lift

## Operator Experience

### Cabin Features

- 15-20% wider interior space
- Front door seal
- Anti-collision cage
- Seat belt
- Ergonomic pilot joystick controls

### Optional Equipment

Seat Warmer • Air Conditioner

## Maintenance & Utility

Maintenance Design	Easy-access upper and back hood for inspection and filling without moving loading arms
Attachment System	Hydraulic Couplers