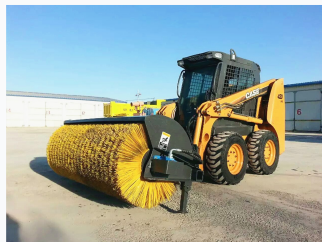
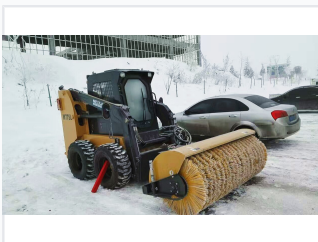


# Skid Steer Angle Broom Attachment

The angle broom attachment is designed for heavy-duty sweeping of dirt, snow, and unwanted materials. It mounts to skid steers, loaders, trucks, and forklifts, with optional hydraulic angle change and varying widths.



## ADDITIONAL IMAGES



## Overview

### High-Efficiency Angle Broom Attachment

This versatile angle broom attachment is designed for rapid and effective debris and snow removal on streets, squares, and roads. It features a robust hydraulic drive system that allows for precise brush rotation and adjustable angling up to  $\pm 30^\circ$  for optimal material direction. Engineered with high-quality polypropylene and steel wire bristles, the roller brush ensures durability and surface protection while maintaining consistent ground contact for an even cleaning effect.

## Performance & Operation

### Steering Angle

**30 degrees**

Max Angle

### Control Method

In-cab controller for brush rotation and left/right deflection

## Design & Durability

### Key Design Features

- Hydraulic drive system
- Floating roller brush design
- Abrasion-resistant bristles
- Adjustable ground spacing
- Surface-safe cleaning

### Brush Material

Polypropylene, Steel Wire

## Applications

### Recommended Applications

Snow Removal • Street Cleaning • Construction Sites • Parking Lots • Road Maintenance