

# Single-Stage Hammer Crusher

The single-stage hammer crusher directly crushes materials with a large particle size to a smaller size. It is suitable for crushing brittle and medium-hard materials with low moisture content.



## ADDITIONAL IMAGES



## Product Overview

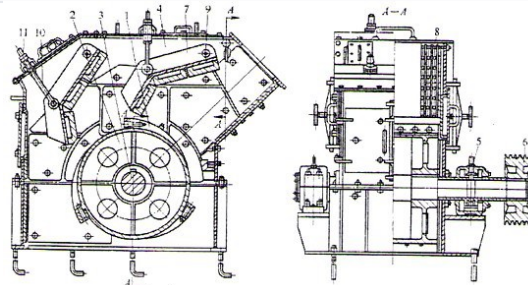


Diagram showing the internal crushing mechanism and material flow path.

### High-Efficiency Single-Stage Crushing

This single-stage crusher is designed for direct size reduction of large materials, ranging from 600-1800 mm, down to 25 mm in a single pass. Ideal for building materials, mining, and chemical processing, it effectively handles brittle and medium-hard materials like limestone. By replacing traditional two-stage crushing systems, it simplifies production processes, reduces energy consumption, and minimizes the overall footprint of your facility.

## Technical Specifications

### Model Specifications

Model	Rotor Diameter (mm)	Feeding Size (mm)	Capacity (t/h)	Power (kw)
DPC140	1400	d800	100-140	160-220
DPC160	1600	d1000	150-240	280-355
DPC200	2000	d1250	330-420	500-630

Maximum Compressive Strength: 140 MPa

## Performance Features

### Operational Capabilities

**1.5 m**

Max Feed Size

**20 %**

Max Powder Content

**150 mm**

Max Output Size

### Key Advantages

Large crushing ratio, Low power consumption, Small footprint, Easy maintenance, Simplified processing