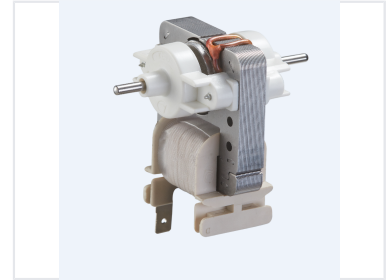


Single-Phase Shaded Pole Motor

This single-phase motor is commonly used in low-torque applications such as refrigerators and fans. It features a simple design with a stator winding and shaded pole construction for starting torque.



General Overview

Reliable Single-Phase Motor Solution

The Single-Phase Shaded Pole Motor is a compact and robust solution designed for light-load starting applications. Featuring a simple structure and stable operation, it ensures low-noise performance and minimal electromagnetic interference. It is an ideal component for a variety of household and medical appliances requiring constant speed.

Technical Characteristics

Key Features

- Compact size and lightweight
- Low noise emission
- Minimal electromagnetic interference
- Robust and simple design
- Self-starting capability

Certifications

Industry Standards

UL, VDE, TUV, 3C

Applications

Typical Applications

- Refrigerators
- Ovens and Microwave Ovens
- Heaters
- Exhaust Fans
- Air Conditioners
- Medical Equipment

Customization

Custom Production

Yes