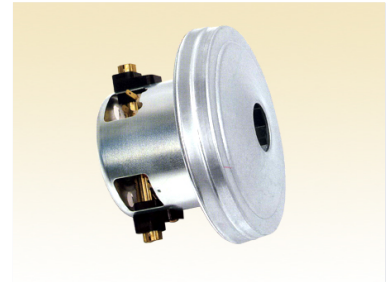


# Shearing Machine Pulley Wheel

This component is used in cutting and fold-bend machines, particularly shearing machines. It is a rotary component used for power transmission or actuation within the machine.



## Product Overview

### Precision Engineered Component

This shearing machine pulley wheel is a high-quality rotary component designed for reliable power transmission and actuation within industrial cutting and folding machinery. Featuring a durable metallic construction, it integrates a precision-grooved pulley system with integrated electrical contact terminals. This robust design ensures consistent performance and seamless mechanical integration for demanding industrial shearing applications.

## Technical Specifications

### Component Category

Rotary Component • Power Transmission • Actuation

### Design Features

- Circumferential pulley grooves
- Integrated electrical terminals
- Black insulator housing
- Precision-machined cylindrical body

### Material

Machined Aluminum Alloy

### Application Compatibility

Shearing Machines, Cutting Machines, Fold-Bend Machines