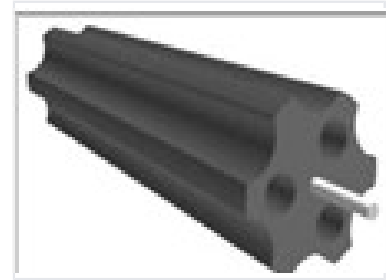


# Self-Priming Multi-Channel Pump

This self-priming pump features a multi-channel design with internal cylindrical bores. The design incorporates external fluting for increased surface area, potentially for heat dissipation or structural reinforcement.



## Product Overview

### High-Efficiency Multi-Channel Design

This self-priming multi-channel pump is engineered for robust performance and fluid management in demanding environments. Featuring specialized internal cylindrical bores and an advanced multi-channel architecture, it offers reliable displacement capabilities. The unit is designed with external fluting to assist in structural reinforcement and effective heat dissipation, ensuring operational longevity.

## Technical Specifications

Priming Type	Self-priming
Mechanism	Multi-channel, Internal cylindrical bores

## Construction & Design

### Key Features

- External cooling fluting
- Internal displacement shaft
- Reinforced structural body

Body Material	Durable composite material
---------------	----------------------------