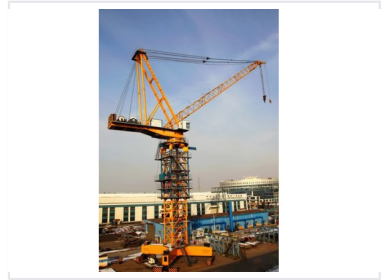


Self-Climbing Luffing Jib Tower Crane

This self-climbing tower crane has a trolley traveling mechanism on luffing jibs and an attached tower body. It is characterized by a big lifting height, lifting capacity, and wide range of operation.



Product Overview

High-Performance Luffing Jib Tower Crane

This self-climbing luffing jib tower crane is engineered for heavy-duty industrial and construction applications, adhering to GB/T 3811-2008 standards for reliability. Featuring a robust structural design, it offers exceptional versatility with multiple jib length configurations up to 65.7m. With a sophisticated hydraulic climbing system and advanced safety mechanisms, this crane is built for precise operation in demanding site environments.

Key Performance Metrics

Performance Highlights

150 t

Main Hoisting Capacity

400 kW

Total Power

107 m

Max Hinge Point Height

Operational Specifications

Working Configuration Matrix

Parameter	Jib 44.7m	Jib 55.2m	Jib 65.7m
Main Hoist Height (m)	141	151	162
Aux Hoist Height (m)	145	155	166
Rotation Speed (rpm)	0-0.25	0-0.25	0-0.25

Environmental Conditions

Operational Environment

Working Temp: -20 to +40 C, Storage Temp: -40 C, Altitude: < 2000m, Working Humidity: 1-80%

Compliance & Standards

Certifications

- GB/T 3811-2008: Specifications for Crane Design
- GB/T 13752-92: Specifications for Tower Crane Design
- GB 6067-2006: Safety Code for Cranes
- JB 4315: Electric Control Device of Cranes
- GB 5144-2006: Safety Code for Tower Cranes