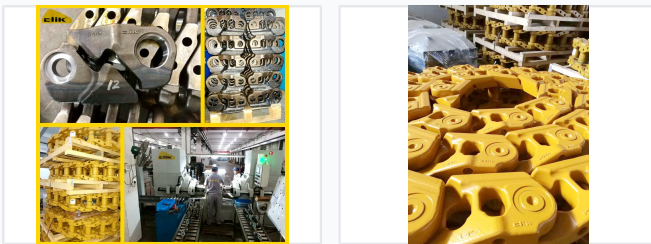


# Sealed and Lubricated Bulldozer Track Chains

Qualified track chains feature a PPR structure compliant with OEM specifications. These heavy-duty chains are sealed and lubricated for optimal performance in demanding applications.



## ADDITIONAL IMAGES



## Product Overview

### Sealed and Lubricated Track Chains

These heavy-duty track chains utilize advanced PPR structure and sealed, oil-filled joints to significantly reduce internal friction. Engineered for extreme mining, forestry, and construction environments, they offer a 30% to 50% increase in service life compared to standard greased tracks. With premium European seals and induction-hardened rail surfaces, these chains provide superior wear resistance and operational reliability.

## Technical Specifications

### Operating Temperature

<b>-50</b> Minimum Temp	<b>180</b> Maximum Temp
----------------------------	----------------------------

<b>Service Life Improvement</b>	50 %
---------------------------------	------

## Construction & Design

<b>Design &amp; Material Features</b>	PPR Structure, Fully Quenched & Tempered, Induction Hardened Rail, European Seals, Deep Hardened Pins
---------------------------------------	---

## Applications

### Industries

- Mining
- Forestry
- Quarry
- Construction
- Agriculture

### Compatible Equipment

Excavators • Bulldozers • Crawler Machines