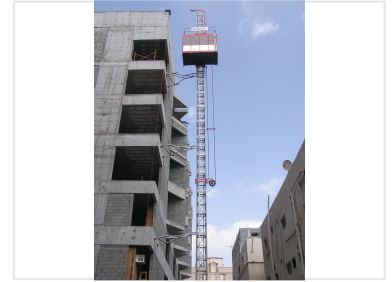
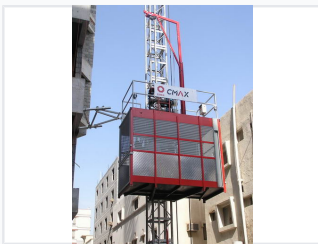


# SC200 Building Hoist

The SC200 building hoist provides vertical transportation for construction sites. It efficiently moves personnel and materials to different building levels.



## ADDITIONAL IMAGES



## Overview

### Robust Vertical Transportation

The SC200 Building Hoist is a high-performance solution designed for the efficient movement of personnel and materials on active construction sites. Engineered for stability and safety, it features a reinforced mast structure, a spacious cage design, and integrated safety mechanisms including anti-drop devices and emergency cut-offs. This hoist is built to withstand demanding environments with durable materials and high-quality electrical components.

## Mast & Structure

Mast Section Dimensions	650 x 650 x 1508 mm
Steel Material Grade	Q235
Mast Wall Thickness	4.5 mm

## Cage Specifications

### Cage Dimensions

Capacity Class	Dimensions (L x W x H)
1.2T / 2.0T	3.0m x 1.5m x 2.5m
2.7T / 3.2T	3.8m x 1.5m x 2.5m

Construction Materials	Aluminum Sidewalls, Checked Steel Base, Checked Steel Roof
------------------------	--

## Safety Systems

### Integrated Safety Devices

- Anti-Drop Safety Device
- Up/Down Limit Switches
- 3-Phase Cut-off ELCB
- Emergency Cut-off
- Side and Roof Door Limit Switches
- Audible Horn

### Buffer System

#### 1.2 Spring

1.2T & 2.0T Models

#### 2.7 Hydraulic

2.7T & 3.2T Models

## Electrical & Drive

### Motor Protection Rating

IP55

### Control Components

Telemechanique, ABB, SIEMENS

## Finish & Protection

### Surface Treatment

- Sand blasting
- 2 Layers Epoxy resin coat

### Color (RAL)

Blue (RAL 5002)