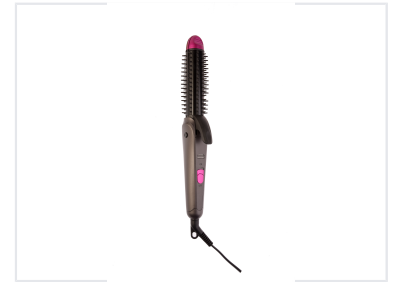


# Rotating Hot Air Brush Hair Styler

This hot air brush stycler is designed to create various hairstyles. It features a rotating brush head for even heat distribution and adjustable temperature settings.



## ADDITIONAL IMAGES



## Product Overview

### Professional Styling Performance

This versatile rotating hot air brush hair stycler is designed to deliver salon-quality results with ease. Featuring advanced PTC heating technology and a protective ceramic coating, it ensures even heat distribution while minimizing heat damage for shiny, healthy-looking hair. Its compact, portable design, combined with a swivel cord and stay-cool tip, makes it an essential tool for both professional stylists and home users on the go.

## Technical Specifications

### Maximum Temperature

**200**

Max Temperature

### Heating Technology

PTC Heater • Ceramic Coating

### Power Requirements

220-240Vac 50-60Hz

### Power Consumption

45 W

## Design & Dimensions

### Convenience Features

- Swivel PVC Power Cord
- Stay Cool Tip
- Hanging Loop
- Indicator Light
- ON/OFF Power Setting

<b>Curler Diameter</b>	30 mm
<b>Straightener Plate Size</b>	100*30mm
<b>Portability</b>	Yes