

# Reverse Parking Brake Valve

This power brake valve system provides high operation safety with minimal operating force. It is ideal for use in construction equipment, material handling vehicles, and forestry and agricultural machines.



## Product Overview

### Reverse Parking Brake Valve

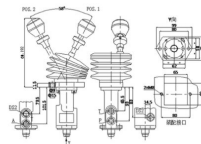
This power brake valve system is designed to provide high operational safety with low operating force. It is specifically engineered for use in construction equipment, material handling vehicles, and forestry or agricultural machinery. The unit features a robust construction to withstand demanding environments, including a protective boot to shield internal components from environmental factors.

## Technical Specifications

#### Parameters

Oil input pressure	20MPa
Brake pressure	10MPa
Oil return pressure	±0.5MPa
Mass	3.2Kg

#### Contour Connection Size



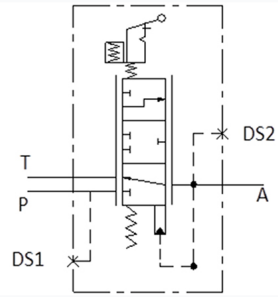
Dimensional drawing and key pressure parameters for installation.

<b>Oil Input Pressure</b>	20 MPa
<b>Brake Pressure</b>	10 MPa
<b>Oil Return Pressure</b>	0.5 MPa
<b>Mass</b>	3.2 Kg

## Applications

<b>Compatible Machinery</b>	Construction Equipment, Material Handling, Forestry Machines, Agricultural Machines, Aerial Machinery, Mortar Machinery
-----------------------------	---

## Hydraulic Schematic



Hydraulic system schematic showing port configuration and flow control.

### Port Configuration

- P (Pressure)
- T (Tank)
- A (Actuator)
- DS1 (Pilot Line)
- DS2 (Pilot Line)